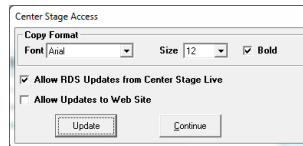


If desired we may authorize on-air staff to post messages and/or alerts directly to the Data Casting Services. RDS Messages are run of schedule messages that will rotate into the displays during non-music periods. Alerts are fixed time events that will be displayed and block all other messages during the selected period. To do so:

One Time Setup

Step 1. Setup system to allow studios to post RDS messages.

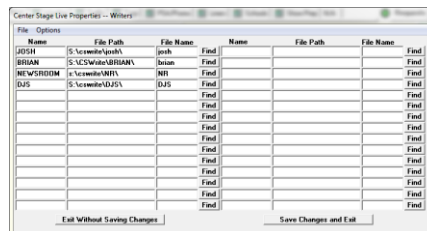
1. Run CSScheduler and Select Center Stage Acces Control from the Tools Menu



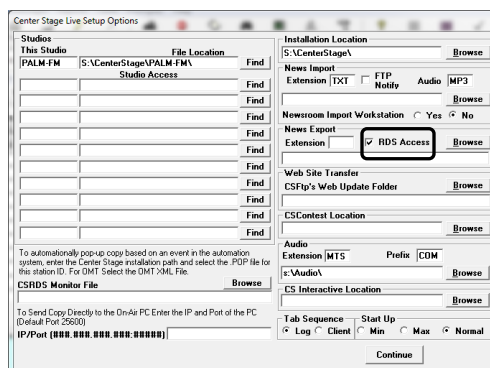
2. Select the Allow RDS Updates from Center Stage Live
3. Click Update
4. Exit CSScheduler

Step 2 Install and configure CSLive in the on-air studio

1. Ensure the user has access and rights to the Center Stage Live installation directory.
2. Use the CSLive Setup.exe from the Arcticpalm/CenterStage Live CD\Clients\CSLive directory to install the application on the studio PC. Use the Change Directory command to set the path to the Center Stage Installation directory.
3. Configure CSLive
 - a. Start CSLive (may need to start as an Admin to configure)
 - b. Select Properties from the Tools Menu



- c. Select Setup Options from the Options Menu



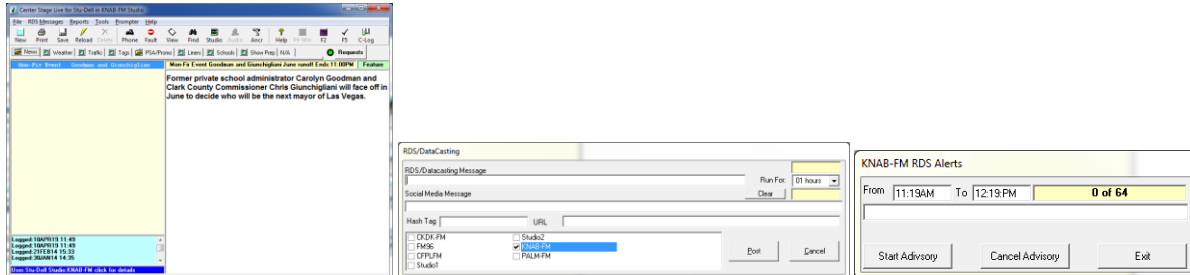
- d. Select RDS Access, Click continue then Save Settings and Exit

Step 3 Set for type of Access

The Center Stage Live application is our paperless studio application that can be used to schedule live copy to the on-air studio as well as provide on-air staff with the ability to post RDS Messages and Alerts. To simplify this process there are special commands that can be added to the shortcut for immediate postings. Once set the on-air staff just needs to click the desktop icon to enter the message.

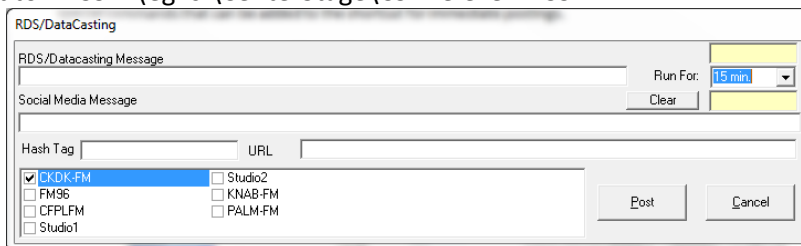
Full Access – No Shortcut Command is required

Live copy available for scheduled periods as well as commands to post RDS Messages and alerts



Post RDS Messages Multiple Stations

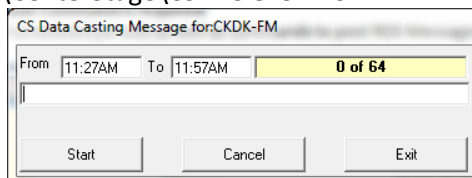
Set Target Line in short cut to RDSSM (eg: s:\CenterStage\CSLive.exe RDSSM)



Enter Message, select stations set duration if different and click Post.

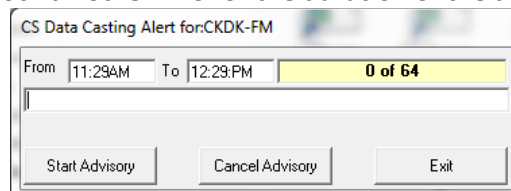
Post RDS messages Single Station

Set Target Line in shortcut to RDS (eg: s:\CenterStage\CSLive.exe RDS)



Enter message and set off time if different and click Start. Use Cancel to remove the message

Post Alerts (Note This message will block all other info for the duration of the alert)



Enter message and set off time if different and click Start. Use Cancel to remove the message