

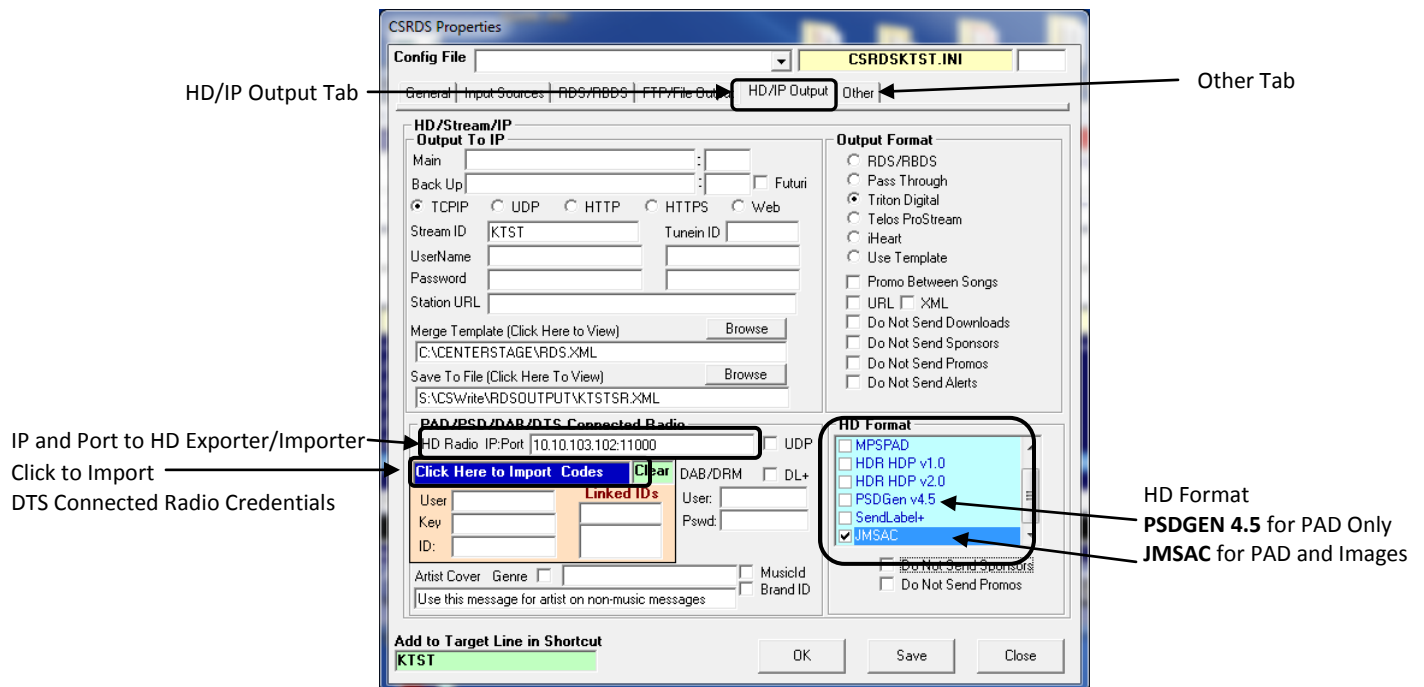
## Overview

The actual link to HD Radio is handled by the iBiquity\HD Radio drivers and not directly from CSRDS. CSRDS simply formats the information based on the selected HD Format and passes it to the iBiquity\HD Radio driver. At that point the HD driver takes over.

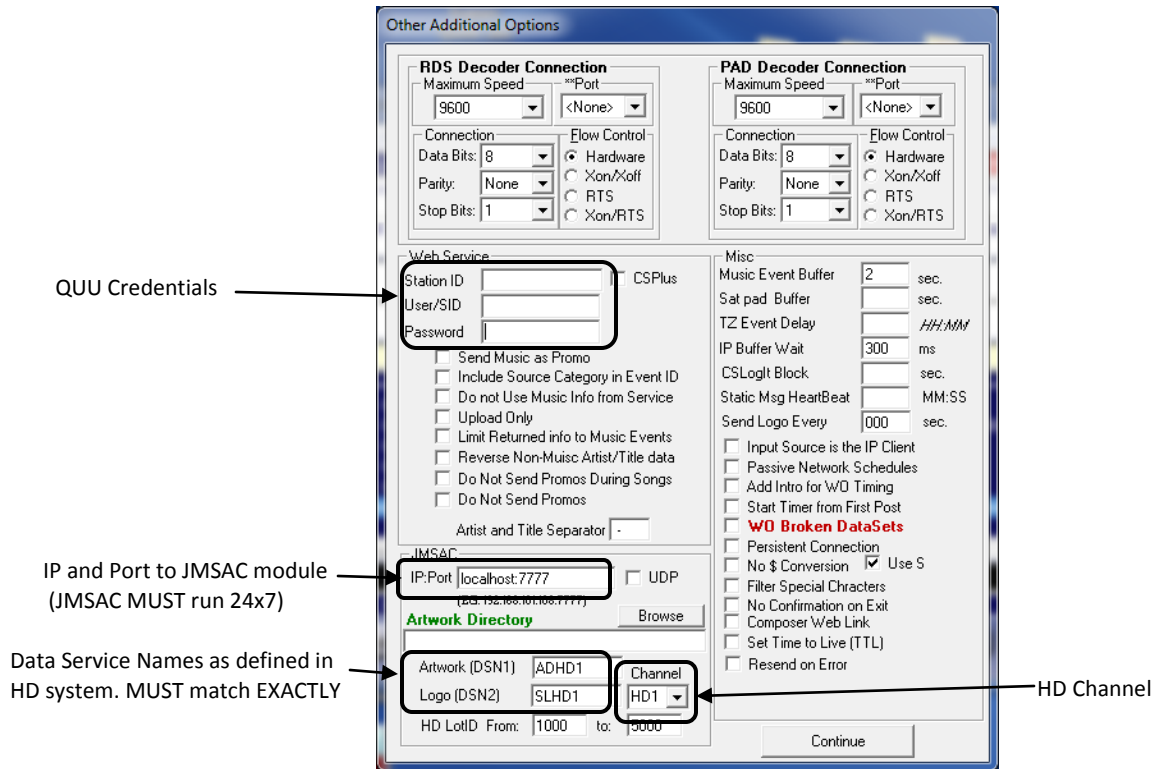
There have been several drivers as new versions were released but unless you have a very old system you will use either the PSDGEN 4.5 for PAD only data or the JMSAC for both PAD and images such as station logos and artwork. When using the JMSAC for Station Logos and Images be sure to assign the logo image in CSScheduler. (see Assigning Logos)

## Configuring CSRDS

1. In CSRDS Select Properties from the Tools Menu and select the HD/IP Output Tab.



2. Enter the IP and Port to the Exporter for HD1 and Gen4 HD Systems or the Importer for HD2,3,4
3. Select HD Format PSDGEN for PAD Only JMSAC for The Artist Experience
4. If desired enter a generic message in the Artist Cover. When entered this will be used when posting non-music messages that do not have an artist as some receivers may leave the old artist in the display unless there is something in the artist field.
5. If using PSDGEN go to Step 13
6. If adding DTS Credentials to post to DTS Connected Radio and get Artist Images, click the Blue Import area. If credentials have been copied in the clipboard they will be inserted, if not the windows browser will open and select the credentials file for this station.
7. Click the Other Tab to configure CSRDS for the JMSAC application



8. If you subscribe to QUU, enter your credentials in the Web Service area to use QUU artwork and campaigns.
9. Enter the IP and Port to the computer where the JMSAC is running. The Default Port is 7777.
10. Enter the Data Service Names as defined in the HD hardware configuration.
11. Select the HD Channel.
12. Click Continue to return to the Properties Window.
13. Click OK to save the settings and return to the CSRDS controller window.
14. Click F5-Start to put CSRDS back on-line.

### Summary

Once CSRDS is put back on-line, CSRDS will post the selected information to the JMSAC module. This will show in the event log. If there is a JMSAC Error check the JMSAC to ensure it is running on the computer with the IP as entered in the JMSAC configuration, the port is correct and accessible from the CSRDS computer.

Event Log Example:

JUL-26 09:12:10 File Copied to JMSAC LotID:1022 MT0026598300\_636797042163605030.jpeg

JUL-26 09:12:11 Posted Artwork to JMSAC:1022

JUL-26 09:12:14 JMSAC=U2/Sweetest Thing

To Verify the JMSAC posting, Select Event Viewer from the CSRDS View Menu and select the JMSAC Tab. This will show the command as posted to the JMSAC along with the JMSAC Response. If the OK message is received all information is going to the HD system correctly.

```
<HDRadio-Envelope><MSAC-Response returnString="OK"><Msg-Info msgType="Demo JMSAC Response"></Msg-Info></MSAC-Response></HDRadio-Envelope>
```