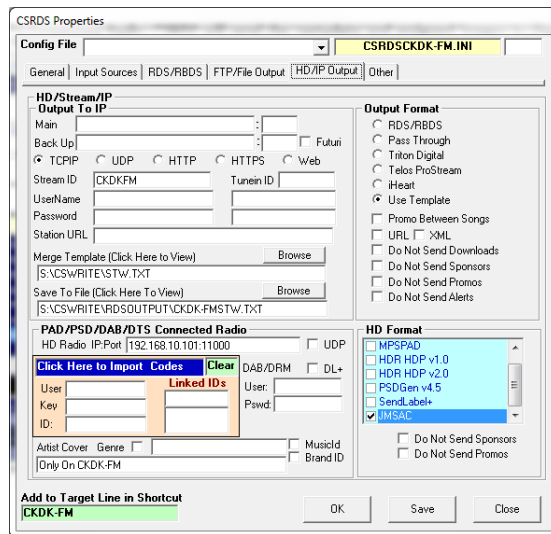


When configured for DTS Connected Radio, CSRDS will send the metadata and assigned images to the DTS Connected Radio service which will post the metadata and image on the new DTS Hybrid Receivers. If there is no assigned artwork, DTS Connected Radio will link the metadata to an artist image and return the link to CSRDS for use on HD Radio, Web Sites, Stream, etc.

To Configure CSRDS for DTS Connected Radio:

1. Fill out the DTS Credentials form and send it to Arctic Palm support and we will pass it along to DTS Connected Radio who will send you a credentials file or once the DTS Dashboard is ready you can Click the Credentials icon to copy the credentials into the clipboard.
2. In CSRDS select Properties from the Tools Menu.
3. Click the HD/IP Output Tab



4. Click the Blue "Click Here it Import Codes" command. If the credentials were copied into the clipboard they will be pasted into the credentials area. If not, a browser window will open and you can browse to and select the credentials file provided by DTS Connected Radio.
5. Click OK to save the settings and return to the main Controller Window
6. Click F5-Start to put CSRDS back on-line

Once started, CSRDS will send your logo (Assigned in CSScheduler), metadata, images assigned in CSScheduler or captured from other services such as MetaPub or QUU and if no image is available, download the free image from DTS Connected Radio and send it to your HD system, Web Site, Stream, etc.