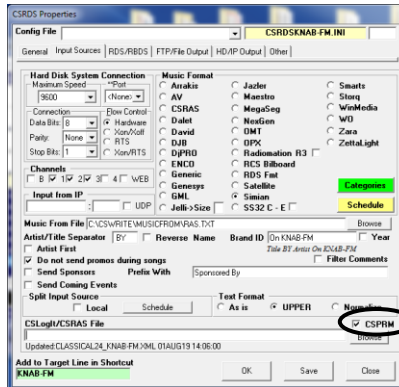


Public Radio stations broadcasting content from the Public Radio Satellite Service (PRSS) using Content Depots Metapub service and the our Public Radio Metadata (CSPRM) add-on for Center Stage Live or CSWeather for Composer you will need to configure CSRDS to monitor a special \NPR\ directory for content scheduled content. To do this:

1. In CSRDS select Properties from the Tools menu and select the Input Sources Tab
2. In the bottom Split Input Sources section select the CSPRM option



3. Click OK to save the settings and return to the Main CSRDS Controller Window
4. Click F5-Start to put CSRDS back online.

Once configured, CSRDS will monitor the \NPR\ sub-directory in the installation directory for XML files based on the selected program and Station ID as defined in the Center Stage ID of the General Tab. As CSPRM or CSWeather create these files CSRDS will capture and post the metadata.

To verify the files being monitored, select Event Viewer from the View Menu and select the Monitored Tab. This will display the files CSRDS is monitoring and the date stamp for the file. When the Date Stamp changes, CSRDS will process the file.

