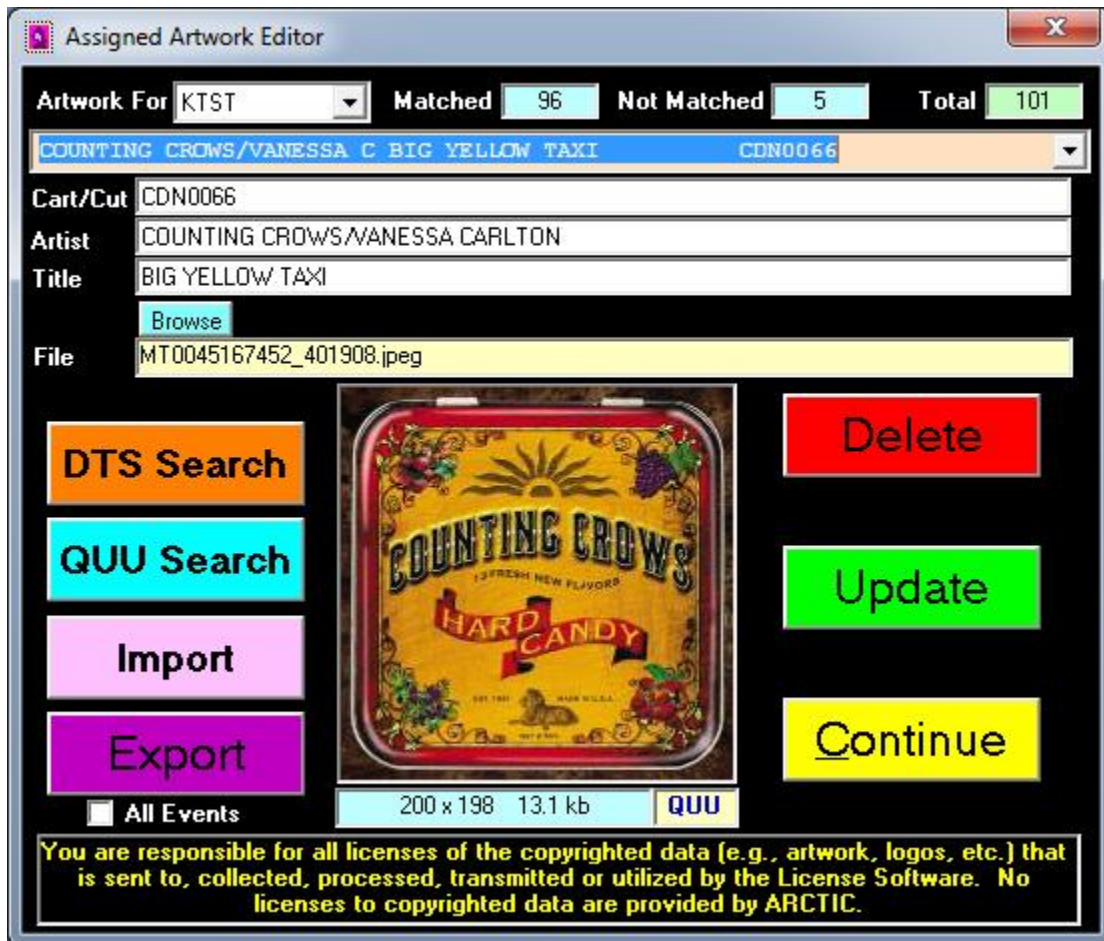


In CSScheduler click the Image icon on the Toolbar or Select Image Editor from the File Menu



1. Select the station from the Dropdown list
2. All songs are listed in the Orange drop down. Select from the list or use Up and Down arrows to scroll through entries
3. Use the Blue Browse command to select station owned image
4. Enter or modify the information and click the Blue QUU Search to search for the artwork from Quu (requires Quu Credentials in CSRDS)
5. Enter or modify the information and click the Orange DTS Search command to search for artwork from DTS (Requires DTS Connected Radio credentials in CSRDS)
6. Use the pink Import command to browse to a comma delimited file with the information and path and filenames for the artwork
7. Use the Purple Export command to generate a comma delimited filer with all un-match images. (Select All Events to export everything from this station)
8. Use Red Delete command to remove the event and artwork from the system
9. Use Update to override the assigned image with the selected image.
10. Use the Yellow Continue command to close the window.

All Artwork MUST pass the HD specification before it can be updated.