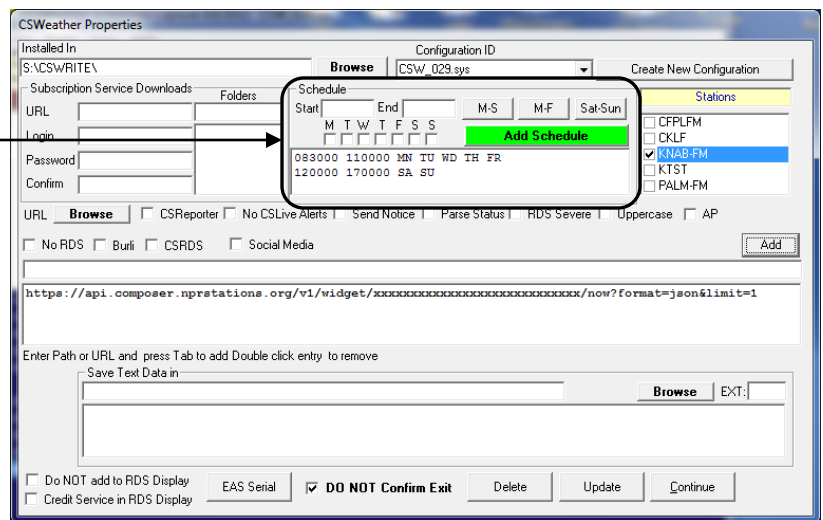


As various NPR programming services have been added we have simplified the process for capturing metadata in CSRDS for posting to the various devices and services such as RDS\RBDS, HD Radio, DTS Connected Radio, Web Sites, Streams, Web Services , etc..

For stations running a separate instance CSRDS for composer you can now schedule the composer day parts n CSWeather and eliminate the second Satellite/Remote Instance of CSRDS. To do so:

1. Update to the latest version of your Center Stage Software so you are running CSWeather Version 9.6.5001 or higher and CSRDS version 9.6.5101 or higher.
2. Start the Composer Instance of CSWeather and select Properties from the tools menu.
3. Enter the Start and End times in the Schedule area and select the days when Composer is used
4. Click the Green Add Schedule command
5. Repeat this process until all Composer Run times are entered.

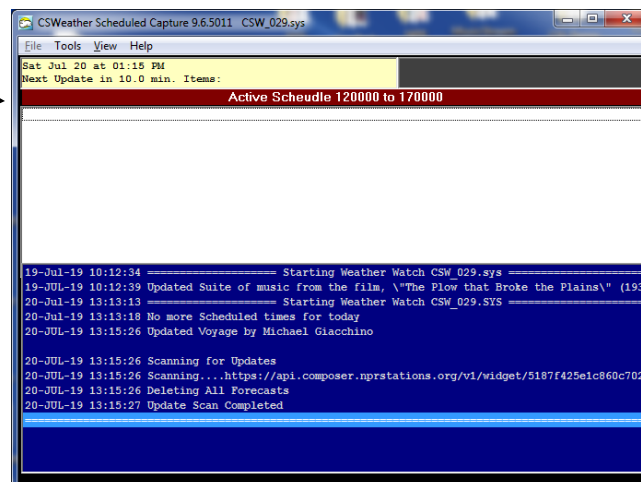
Run Schedules
Enter and Click Ad Schedule to add a schedule
Double click an existing schedule to remove it



6. Click Update and Continue

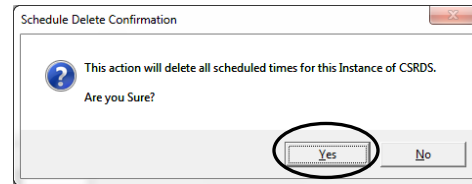
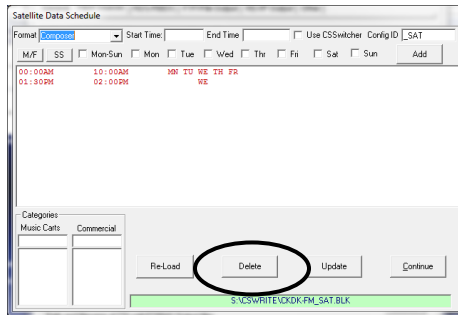
CSWeather will now show a red Active Schedule message when capturing Composer data or a Blue No Active Schedule when not monitoring Composer.

Active/Inactive Indicator

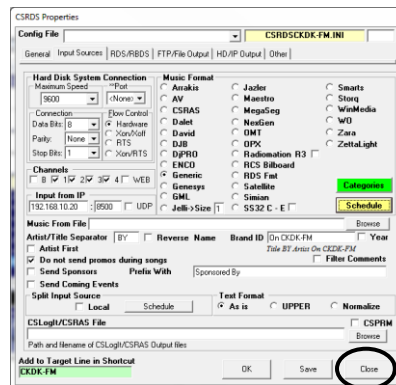


Once CSWeather is configured you can eliminate the Satellite/Remote Instance of CSRDS. You will need to delete the schedule so the local instance does not use the old schedule. To do this:

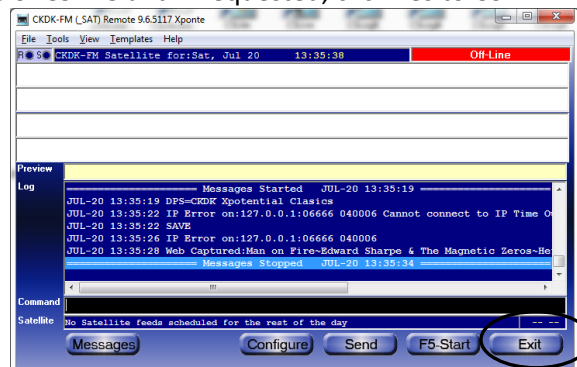
1. In the existing Satellite/Remote instance of CSRDS Select Properties from the Tools Menu.
2. Click the Input Sources Tab
3. Click the Yellow Schedule Command
4. When the Schedule appears Click Delete and Click Yes to Confirm the deletion



5. Click Continue return to the CSRDS Properties Window.
6. Click **Close** to Return to the CSRDS Controller Window (Do Not Click Save or OK)



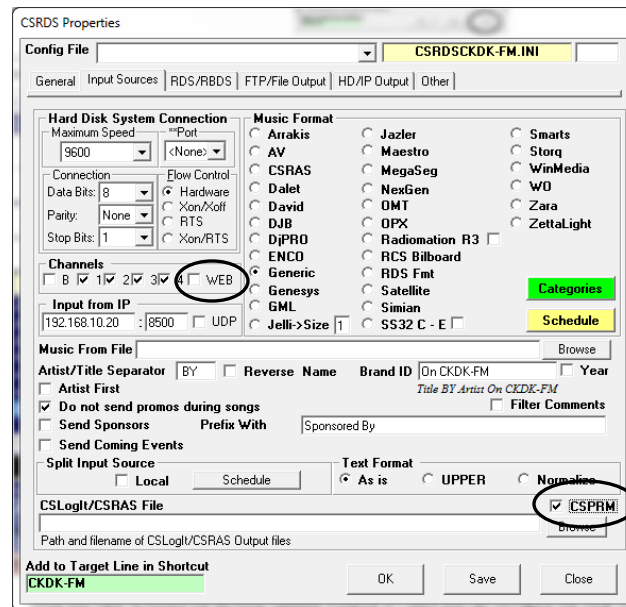
7. Click Exit to close this instance of CSRDS and if requested, click Yes to Confirm Exit



You can then remove the Shortcut to this instance of CSRDS

Once you have removed the Remote/Satellite Instance of CSRDS you can configure the Local Instance to capture Composer data from the new CSScheduler. To Do so:

1. Select Properties from the Tools Menu and select the Input Sources Tab.
2. Uncheck the Local option
3. If not already selected, Select the CSPRM Option
4. Uncheck the Web option
5. Click OK to Save the settings and return to the Controller Window
6. Click F5-Start to put CSRDS Back on-line



Once CSWeather has posted a Composer Event CSRDS will post the metadata as if it came from CSPRM and you can verify that CSRDS is monitoring the Composer file by Selecting Event Viewer from the View Menu and selecting the monitored Tab. This will display a list of the files CSRDS is monitoring.

Composer File from
CSWeather

