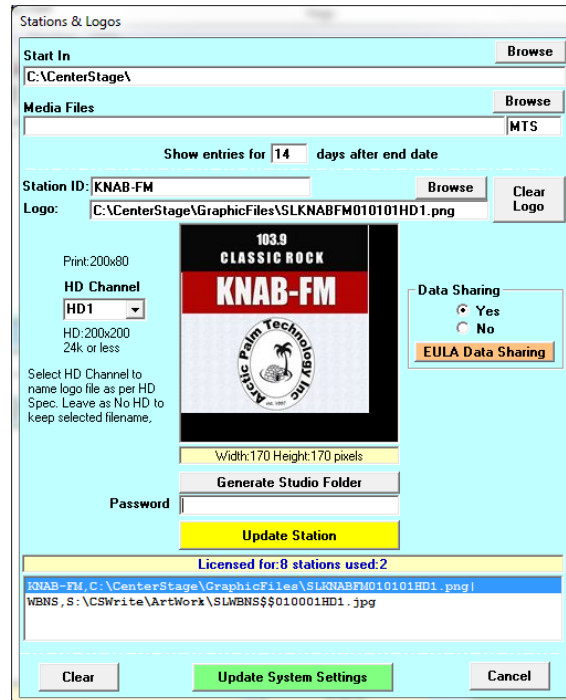


To assign a logo to a station:

1. Start CSScheduler and Select Stations and Logos from the Tools Menu'



2. If the station has already been entered double click the entry in the bottom of the window or enter the Station ID.
3. Select the HD Channel and use the Browse command to select the logo file
4. Once selected the file will be edited to ensure it meets the HD specification and displayed along with the size information.
5. Click the Yellow Update Station command to assign the image file to this station. This process will rename the file to meet the HD Logo Filename specification and copy the file from the current path to the GraphicFiles directory in the installation directory. This will ensure the file is accessible from CSRDS.
6. When all stations and logos have been defined, click the Green Update System Settings to complete the update and return to the CSScheduler window.